



POLO TEMPLATE

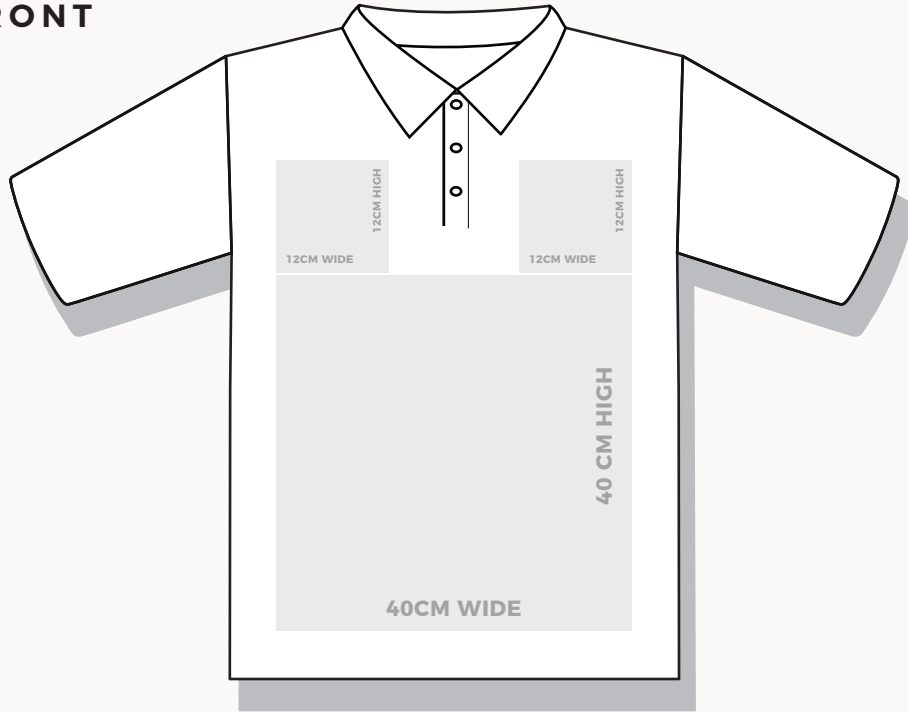
DIRECTIONS: Place your artwork in the layer labeled "YOUR ARTWORK" and within the grey printable area. You can follow the print size guide lines shown in the layer labeled "MAX PRINT SIZE".

NOTE: The Polo template shown is an adult medium size polo. The template is close to actual size but not exact.

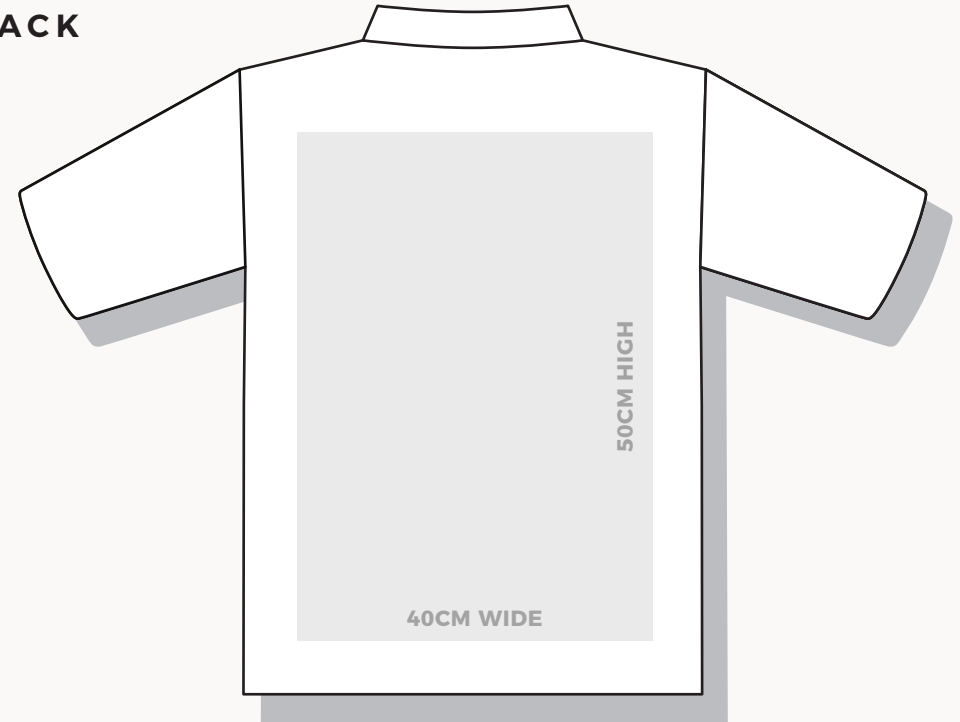


- ✓ CHECK YOUR SPELLING
- ✓ CHECK SIZING OF ARTWORK / LOGOS
- ✓ CONVERT ALL TYPE FONTS TO OUTLINES
- ✓ SPECIFY GARMENT COLOURS
- ✓ SPECIFY PRINT COLOURS

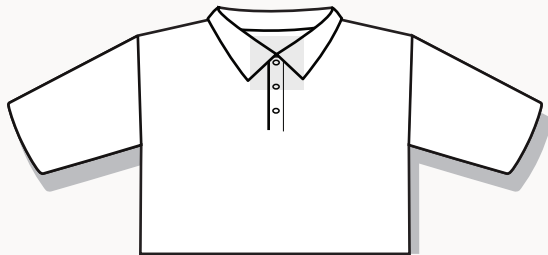
FRONT



BACK



NECK LABEL

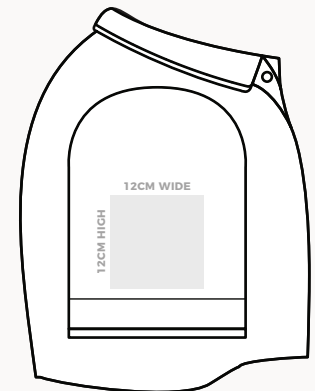


LEFT



SLEEVES

CHECK WHICH SLEEVE WILL BE PRINTED



RIGHT

